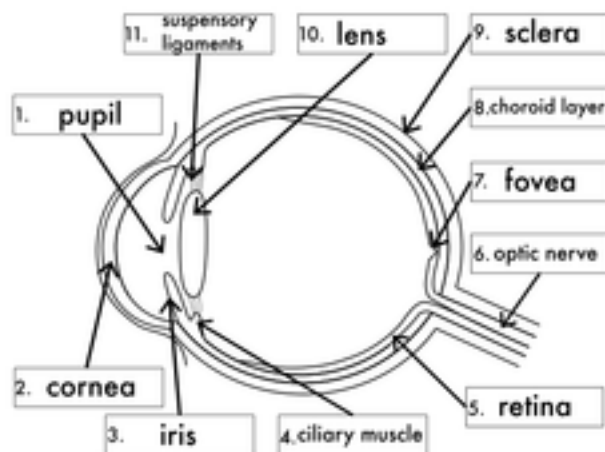


STRUCTURE OF THE EYE

Label the diagram of the eye below, with the structures given in the table to the right.



In the table, give a brief description of the function of each of the structures, you have labelled on the diagram of the eye above.

Structure in the eye	Function of the eye structure
cornea	Refracts (bends) the light into the eye.
pupil	Allows light to enter the eye and can change in size depending on how bright the surroundings are.
retina	Where the light-sensitive cells, rods and cones, are found.
optic nerve	Transfers the image formed on the retina to the brain.
fovea	The part of the retina where cone cells are concentrated. The light is focused here.
ciliary muscle	Contract and relax, to change the shape of the lens when looking at objects close and far away.
suspensory ligaments	Attach the lens to the ciliary muscles.
lens	Focuses the light on the retina.
iris	This is a circular muscle which controls the size of the pupil.
choroid layer	Full of blood vessels to deliver nutrients to the eye and also remove waste materials.
sclera	Tough, protective layer around the eye (white part as you look at your own eye).